

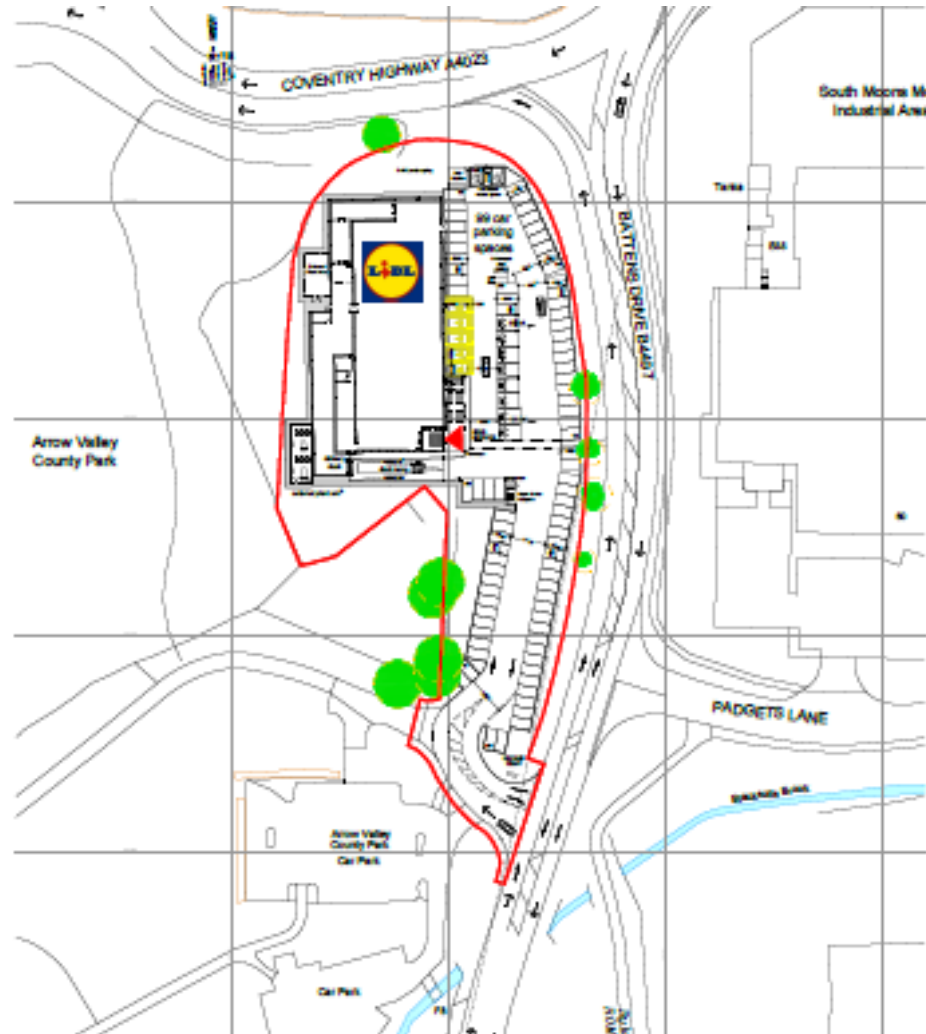
# 18/01049/FUL

Land At, Battens Drive, Winyates,  
Redditch,

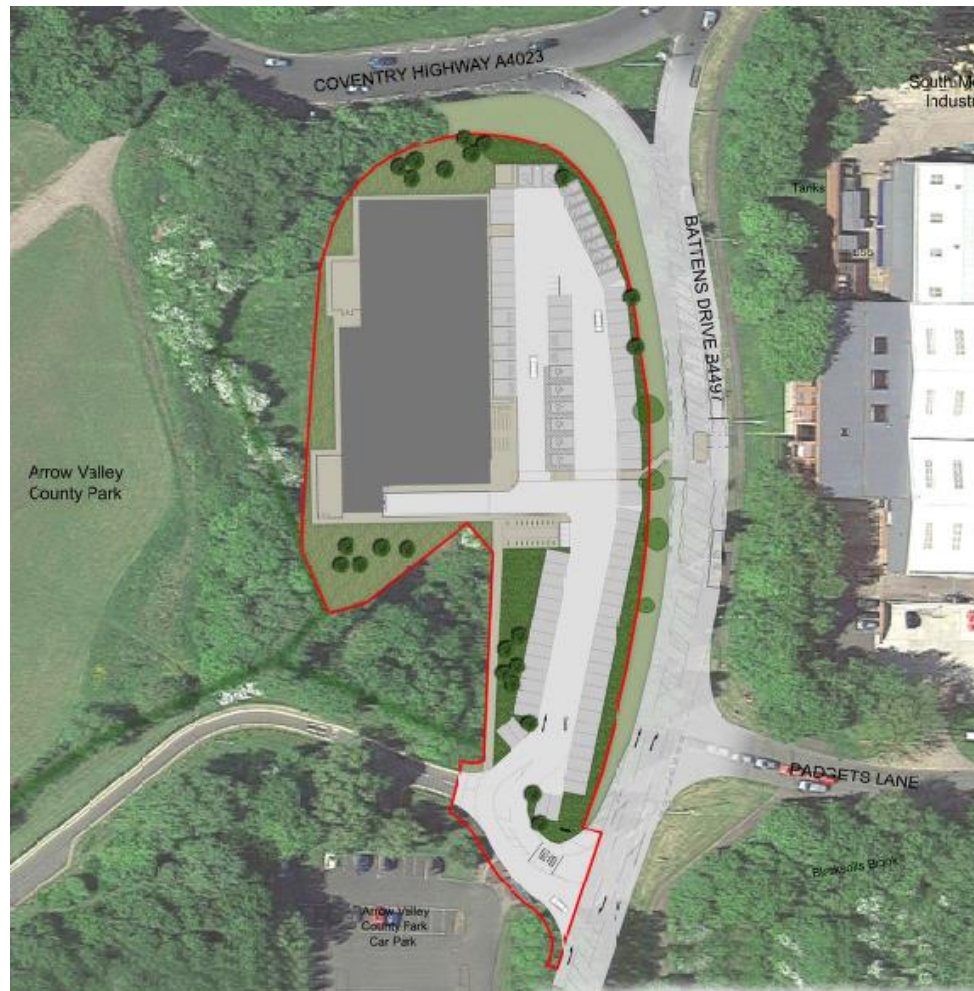
Demolition of existing buildings and erection of a class E retail foodstore with associated car parking, access, landscaping and associated engineering works, and relocation of existing substation.

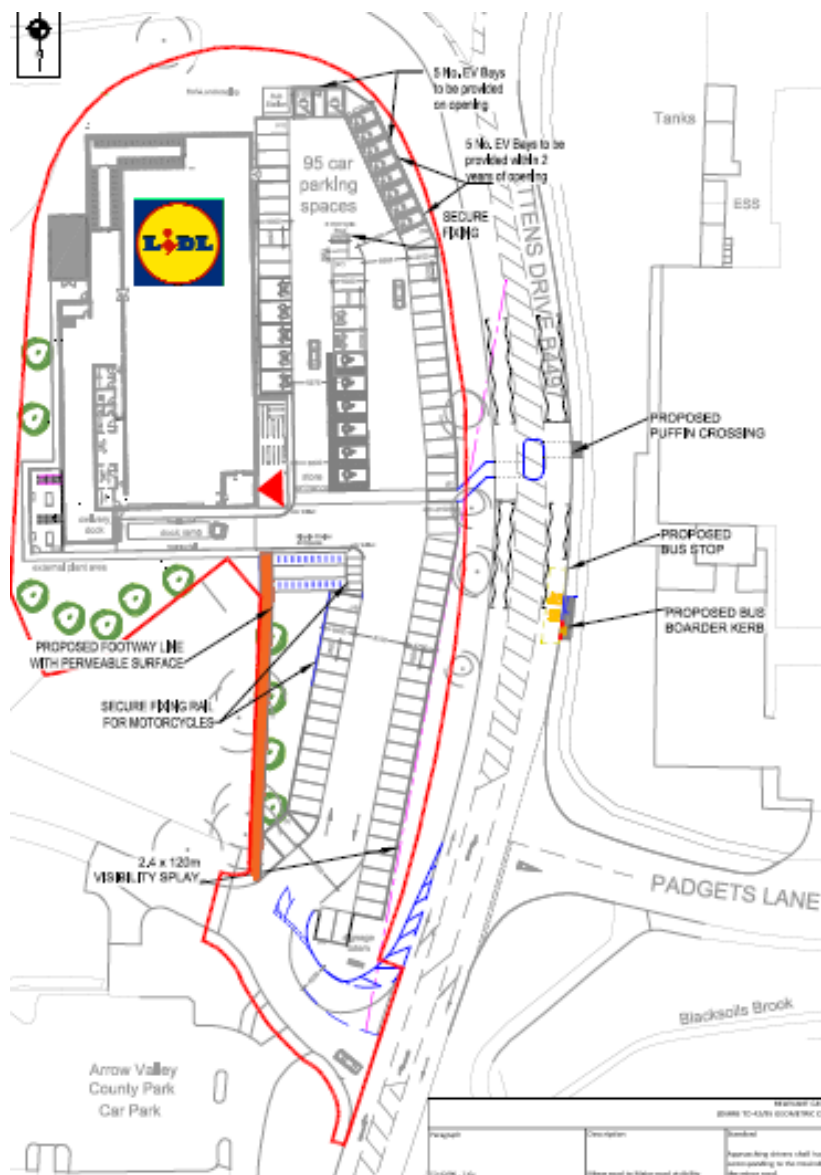
Recommendation: Delegate to Head of Service to GRANT planning permission subject to a legal mechanism and conditions

# Site Location Plan

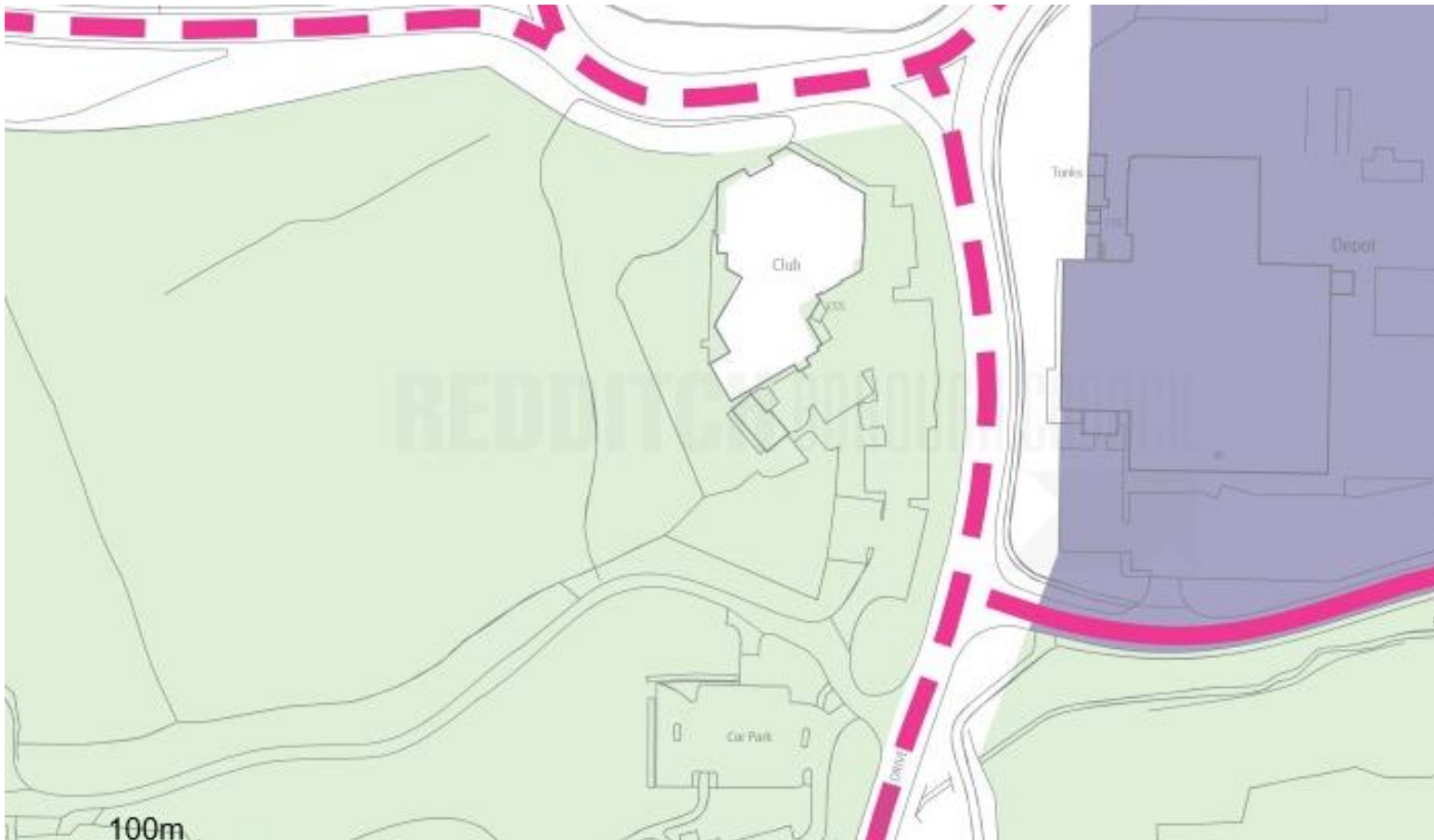


# Block Plan





# Extract of site in the Borough of Redditch Local Plan No.4





# View of the site from Padgets Lane



# View of the site from the roundabout on Battens Drive

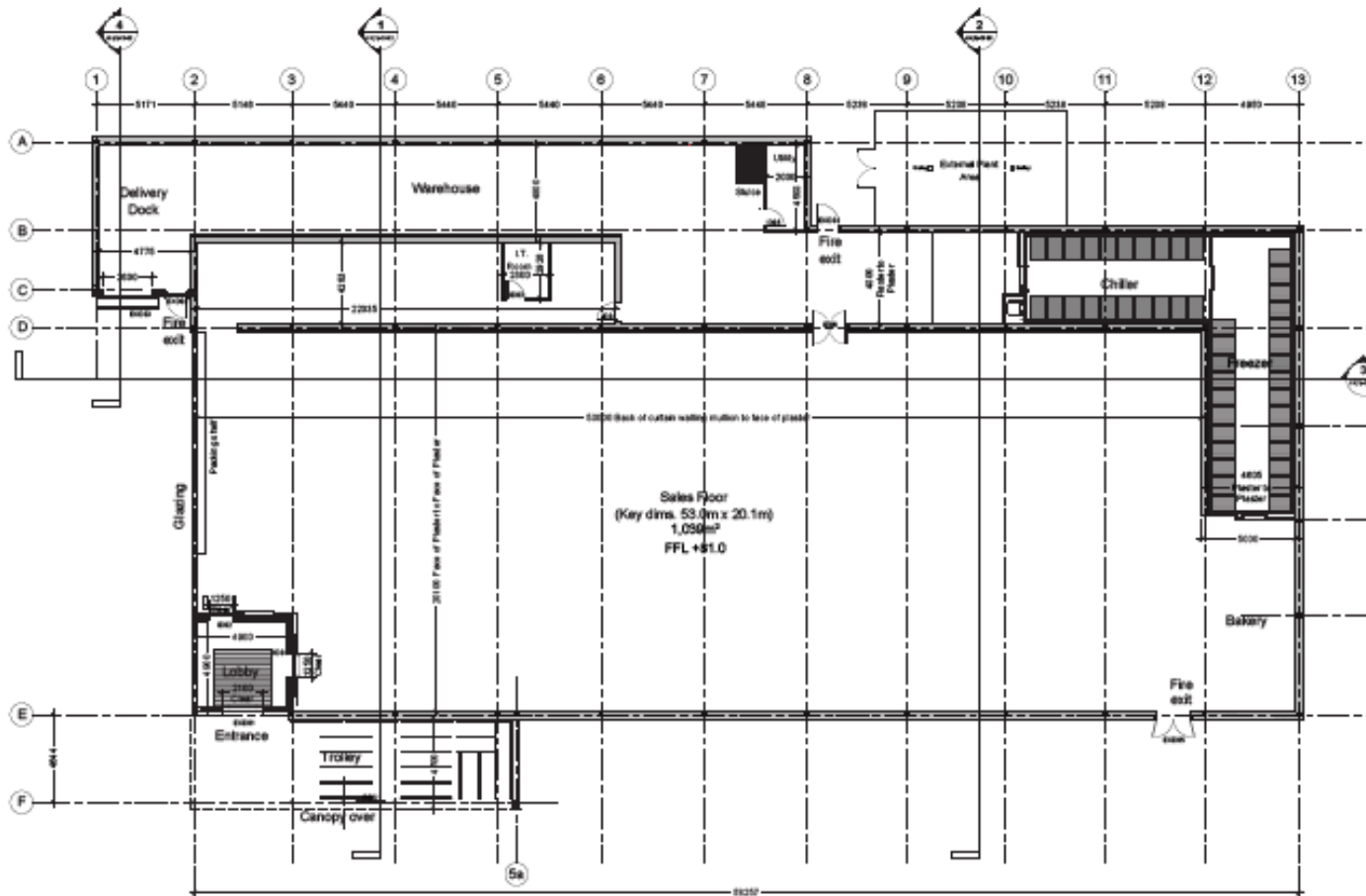


# Current shared access arrangements into the site





# Proposed floor plans



GROUND FLOOR PLAN

# Proposed Elevations

1. Red brick (interior wall finish)  
2. Timber effect cladding panel  
3. Render wall finish  
4. Steel security fire door, powder coated grey colour  
5. Roof sheeting  
6. Custom walling double glazed powder coated aluminium, grey colour  
7. Recycled stone, grey colour  
8. Metal cladding (claw) to match cladding grey RAL colour 7034



EAST ELEVATION



WEST ELEVATION



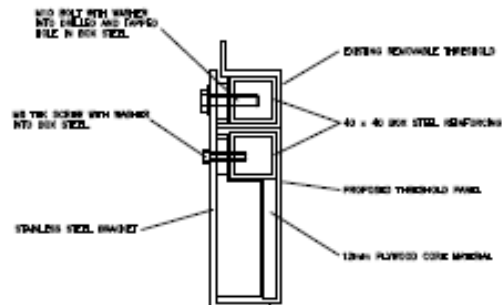
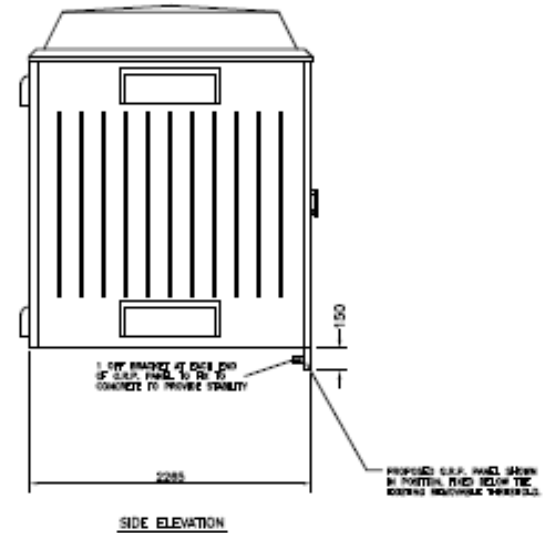
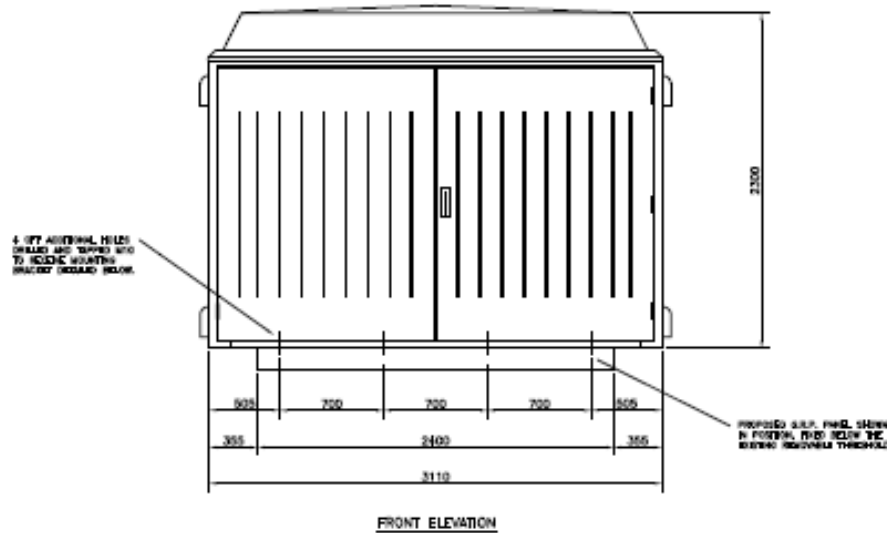
SOUTH ELEVATION



NORTH ELEVATION

- Proposed Material Schedule
- 1 Red brick (interior wall finish)
  - 2 Timber effect cladding panel
  - 3 Render wall finish
  - 4 Steel security fire door, powder coated grey colour
  - 5 Roof sheeting
  - 6 Custom walling double glazed powder coated aluminium, grey colour
  - 7 Recycled stone, grey colour
  - 8 Metal cladding (claw) to match cladding grey RAL colour 7034

# Proposed sub station



# Landscaping scheme (part of)



# Landscaping scheme (part of)

